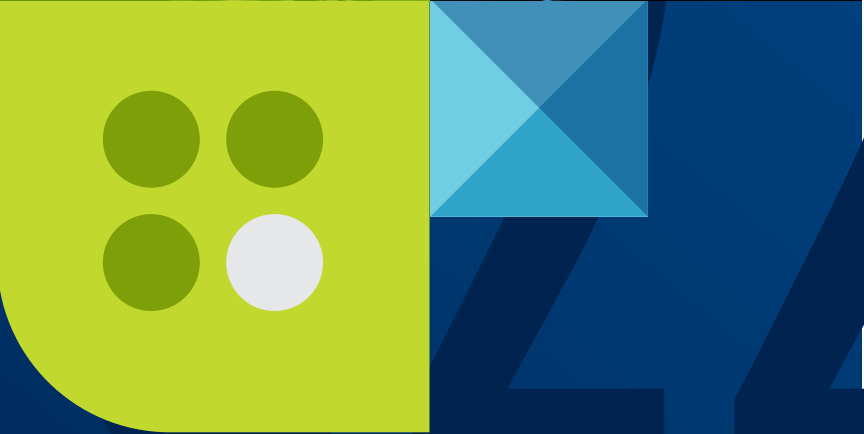


COMMUNITY IMPACT

2022 YEAR IN REVIEW





A LETTER FROM BOB DUNN

BUILDING INSPIRED COMMUNITIES

- Who is JE Dunn?
- In the News
- The JE Dunn Legacy
- JE Dunn's Community Impact Purpose + Vision

INSPIRED PEOPLE

- Meet the Team
- Community Ambassadors
- Serving Others
- Giving Back
- Inspiring Others
- A Culture of Inclusion

INSPIRED PLACES

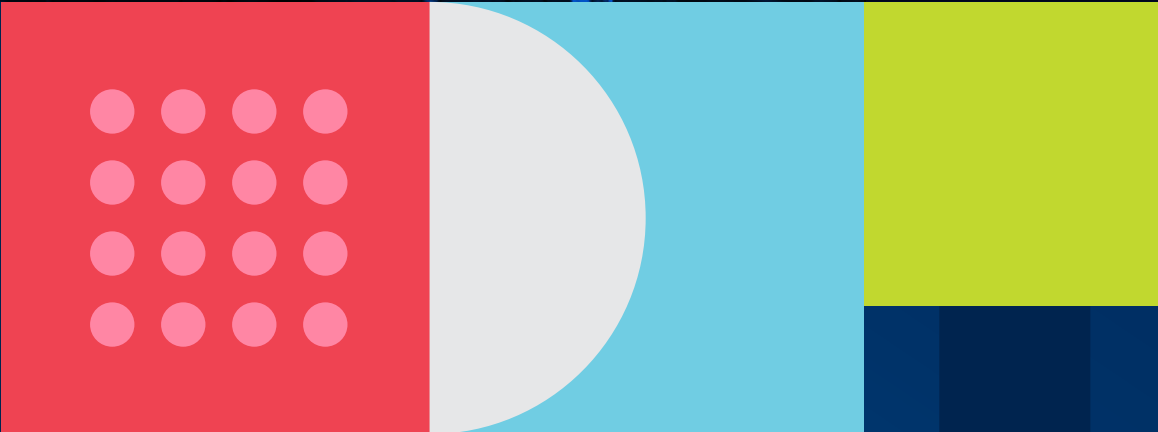
- East
- Midwest
- South Central
- West

ENRICHING LIVES

- Environmental, Social and Governance Responsibility
- A Family Legacy: *The Dunn Family Foundation*
- Building the Future: A K-12 Construction Education Initiative of JE Dunn

A LETTER FROM OUR PRESIDENT & CEO

a letter from
BOB DUNN



In 2022, the United States experienced the highest inflation rate in 40 years due to many factors, including supply chain disruptions and escalating energy costs. The average 9.1 percent consumer price increase negatively impacted people's pocketbooks, especially those living on the margins of life. To help those most in need, JE Dunn Construction employees, the Dunn Family Foundation, and Dunn family members donated their time, talent, and treasure to numerous charitable organizations.

After two years of events being canceled or postponed due to COVID-19, it was a relief to get back together in person this past year for volunteer activities and fundraising events with our nonprofit partners. Thanks to JE Dunn's Employee Match Program, community ambassador network, and philanthropic leadership in each of our 26 offices across the country, we contributed to more than 1,170 nonprofits in 2022. If John Ernest "Ernie" Dunn, Sr., the founder of this company, were alive today, he would be extremely proud of his employees' commitment to consistently delivering top quality construction safely, on time, and on budget. He would also be overjoyed that JE Dunn continues to donate 10 percent of its pre-tax net income to charities and that we launched Building the Future this past year, a K-12 construction education initiative centered on bringing awareness to careers in construction. JE Dunn's generosity and commitment to our future workforce and industry are key differentiators that set us apart.

Lastly, I want to pay tribute to my brothers, father, and my dear mother, Jean Dunn, who passed away on December 19, 2022. Jean was a wonderful mother, wife to our father, Bill Dunn, Sr., and a friend to many. Countless charities have received impactful gifts from Jean, Bill, Sr., the Dunn family, or JE Dunn during her lifetime. Jean was deeply committed to her faith and lived it daily through her devotion to helping the less fortunate. She is deeply missed by Bill, Sr., my brothers, myself, and numerous others. With many hopes and prayers, Bill Dunn, Sr. will be celebrating his 100th birthday in July 2023, and JE Dunn will be celebrating its 100th anniversary next January. Until then, I wish everyone many blessings, good health, and much joy.

Sincerely,

Bob Dunn

SENIOR VICE PRESIDENT | COMMUNITY AFFAIRS



BUILDING
INSPIRED
COMMUNITIES

who is JE DUNN?

We are builders. JE Dunn is a general contractor providing exceptional construction management services for commercial building projects. We work as a partner to our clients by first understanding their customers and goals and then providing transformational solutions with certainty of results. The organization was founded by John Ernest "Ernie" Dunn, Sr. in Kansas City in 1924, expanding to offices from coast to coast.

WE BELIEVE IN...

Doing the right thing.
Serving others.
Fun and fulfilling lives.

26
OFFICES

3,900
EMPLOYEES



the JE Dunn LEGACY

Since day one, JE Dunn and our employees have been committed to giving back to our local communities. JE Dunn's corporate philanthropy invests 10 percent of net income in charitable causes across the country and empowers our employees to make an impact.

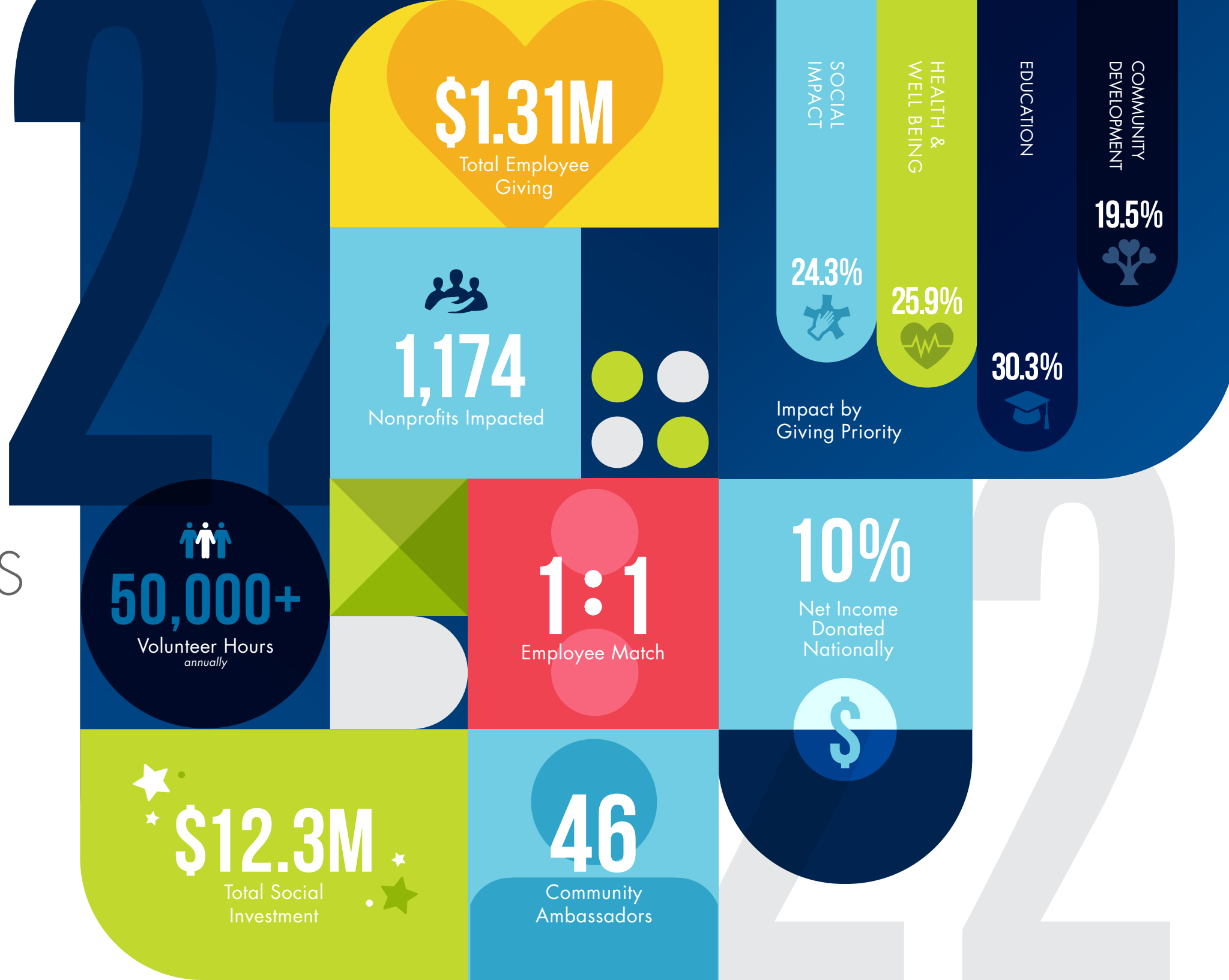
In 1981, Bill Dunn, Sr. and his five sons founded the **Dunn Family Foundation**, reinforcing the family values of integrity, generosity, and compassion. The Dunn Family Foundation is a private charitable foundation dedicated to enhancing the quality of human life and creating solutions to community needs in the greater Kansas City metropolitan area.

TOGETHER, WE CAN MAKE A DIFFERENCE.

JE DUNN IN THE NEWS 2022

#1 Commercial Construction Company in the Austin Area – *Austin Business Journal*
Best General Contractor – *Ingram's*
Best General Contractor in Kansas City – *Kansas City Magazine*
Best Places to Work – *Nashville Business Journal*
Best Places to Work – *Austin Business Journal*
Best Places to Work – *Denver Business Journal*
Best Places to Work – *Kansas City Business Journal*
Best Places to Work – *Minneapolis/St. Paul Business Journal*
Best Places to Work – *Charlotte Business Journal*
Best Places to Work in Oklahoma – *The Journal Record*
Build TN Awards, Community Service Award – Associated General Contractors of Middle Tennessee (AGC)
Champions of Business – *Kansas City Business Journal*

2022 Impact
BY THE NUMBERS



JE Dunn's Community Impact
PURPOSE

To enrich lives through corporate and employee engagement in the communities where we live, work, and build.

OUR VISION

JE Dunn Construction and our employees will invest time, talent, and resources in a holistic manner in charitable organizations that impact...

- COMMUNITY DEVELOPMENT
- EDUCATION
- HEALTH & WELL BEING
- SOCIAL IMPACT



INSPIRED
PEOPLE

meet the TEAM

JE Dunn's Community Impact team is located at our corporate headquarters in Kansas City, uniting our philanthropic efforts across our offices nationwide.



Bob Dunn
SVP, COMMUNITY AFFAIRS



Maria O'Connor
GRANT SPECIALIST



Chera Hishaw
COMMUNITY IMPACT EDUCATION MANAGER



Nancy Phelps
DIRECTOR, COMMUNITY IMPACT



Kali McGee
COMMUNITY IMPACT SPECIALIST



HEAR FROM OUR 2022 INTERNS!

"Throughout the summer, I learned that **"Best People + Right Culture"** is what JE Dunn strives to represent every day, which is why having a Community Impact department is so important to the company. JE Dunn knows that to achieve the culture and environment we aim to create, we must continue to help our community, as it is an opportunity for employees to grow as people, better learn how we fit into the world around us, and positively impact our perspectives for the rest of our lives."



- Jaelyn Bedell,
Community Impact
Intern
(Kansas City)

"I was interested in joining JE Dunn's Community Impact team because of the long history of community engagement and giving back. I've really enjoyed understanding the impact of our giving through both quantitative and qualitative means. The work the Community Impact team does ensures that we are meaningfully invested in the communities we build."

- Reilly Atkins, Community
Impact Intern (Kansas City)



COMMUNITY AMBASSADORS

JE Dunn's community ambassadors volunteer their time and talent to serve their local communities. Created in 2020, the network has grown to 46 employees across the nation who are passionate about giving back, from marketing specialists to general superintendents. Ambassadors plan local volunteer opportunities, share best practices for community engagement, and spearhead company-wide community initiatives like **National Volunteer Week** and the **Stand Up for Suicide Prevention**. Introducing...

ATLANTA | Lee Jarboe
ATLANTA | Pamela Johnson
AUSTIN | Catie Cacchione
AUSTIN | Elizabeth Williams
CHARLESTON | Janet Bates
CHARLOTTE | Jennifer Badra
CHARLOTTE | Bailey Barnett
CHARLOTTE | Susan Bradt
DALLAS | Chris Peck
DALLAS | Lyndsie Perrenoud
DALLAS | Travis Walker
DES MOINES | Niki Herink
HOUSTON | Angela McGary
HOUSTON | Anita Parrett
KANSAS CITY | Emily Held
KANSAS CITY | Dave Ruf
MINNEAPOLIS | Kori Shingles
MINNEAPOLIS | Becca Klotz
NASHVILLE | Drew Emerson
NASHVILLE | Tabitha Williams
NASHVILLE | Kaitlyn Davis
NORTH DAKOTA | Melissa Gjermundson
NORTH DAKOTA | Heather Boyd

NORTH DAKOTA | Krystal Mellmer
OKLAHOMA CITY | Krystal Harris
OKLAHOMA CITY | Lindsey Moore
OMAHA | Corey Erdkamp
OMAHA | Chris Orellana
OMAHA | Blair Gilkyson
PHOENIX | Ava Apodaca
PHOENIX | Monty Everson
PHOENIX | Kim Guerin
PORTLAND | Blake Guillen
PORTLAND | Amy Uchtman
RALEIGH | Bo Crouse
RALEIGH | Paul Tanner
ROCKY MOUNTAIN | Rose Lovato
ROCKY MOUNTAIN | Callie Morris
ROCKY MOUNTAIN | Emily McBeth
SANTA CLARA | Estelle Cragholm
SAVANNAH | Vince Shirbach
SPRINGFIELD | Kelley Norman
TAMPA | Maria Escalona
TEMPLE | Kaitlyn Coufal
TEMPLE | Eleonor Oshitoye
WICHITA | Alex Breitenbach

we believe in
**SERVING
OTHERS**

At JE Dunn, one of our guiding principles is: **We believe in serving others.** From nonprofit boards to volunteerism, JE Dunn employees live this guiding principle every day, dedicating an average of 50,000 hours annually to serving others.

VOLUNTEERS OF THE YEAR



CORPORATE

Jason Hickam
NATIONAL PRECONSTRUCTION &
ESTIMATING DIRECTOR
KANSAS CITY, MISSOURI

STRATEGIC
INNOVATIVE
COMMITTED



MIDWEST

Brady Myers
PROJECT MANAGER
KANSAS CITY, MISSOURI

SELFLESS
DRIVEN
GRACIOUS



EAST

Ashley Lloyd
ESTIMATING ENGINEER
SAVANNAH, GEORGIA

STEADFAST
SELFLESS
ADMIRABLE



SOUTH CENTRAL

Elizabeth Williams
ESTIMATING MANAGER
AUSTIN, TEXAS

GIVING
KIND
CARING



HEALTHCARE

Desiree Curry
PROJECT MANAGER
NASHVILLE, TENNESSEE

GENUINE
DEDICATED
INSPIRATIONAL




WEST

Amy Winterowd
VICE PRESIDENT, CLIENT SOLUTIONS
PORTLAND, OREGON


AMAZING
CARING
PASSIONATE

NATIONAL VOLUNTEER WEEK

In 2022, JE Dunn employees united across the country to impact their local communities during National Volunteer Week (April 17-23). Our inspired people cleaned up parks, sorted produce at food pantries, and completed minor construction projects.



IN ONE WEEK...


1,240
Volunteer Hours

42
Volunteer Opportunities Nationwide



460
Employee Participants



In our hometown of Kansas City, 77 employees picked up litter and debris across two downtown parks on Earth Day during National Volunteer Week. JE Dunn became **Kansas City Parks & Recreation's** first **Partner in Parks** in 2021. Employees hold a monthly cleanup of the **Ilus Davis Park**, located directly across the street from our headquarters.

we are dedicated to

GIVING BACK

Our inspired people are passionate about giving back to their local communities. In addition to volunteering time and talent, JE Dunn is proud of our employees' commitment to support their personal passions through charitable giving.

1:1 EMPLOYEE MATCH PROGRAM

In 2020, JE Dunn launched an Employee Match Program to support and expand our employees' community impact. JE Dunn now matches employee donations to nonprofits, dollar for dollar, up to \$1,000 per employee per year. The first three years of the program, JE Dunn lifted the per-employee maximum for the program, so employees could support their favorite causes in a time of great need.

\$1.45M

Employee Donations + 1:1 Match

531

Nonprofits Supported

25

JE Dunn Offices with Donations Matched

UNITED WAY

Since 1983, JE Dunn has partnered with **United Way**, beginning in our hometown of Kansas City. United Way works daily to ensure that all members of our communities thrive in health, education, and financial stability.

\$592K

Employee United Way Donations

+

\$59K

10% JE Dunn Match

=

\$651K

Total 2022 United Way Impact



INSPIRING OTHERS

MARCUS TAYLOR INSPIRATION AWARD

Each year, the **Marcus Taylor Inspiration Award** is given to one JE Dunn employee who truly inspires fellow coworkers. A long-term employee of JE Dunn, Marcus passed away in 2017 after a courageous fight with cancer. His legacy lives on through JE Dunn's inspired people, including this year's award winner.

JUSTIN KILLEN

SUPERINTENDENT 3

ATLANTA

Nominated by multiple JE Dunn employees

"I have worked with many superintendents in my five years here at JE Dunn. Justin Killen has got to be the best that I have worked under," said trade foreman Brayan Nambo. "He cares about the quality of the work. He cares about the life/work balance. He cares about safety. He cares about his team, and most importantly he cares about the self-growth of each team member. I hope to one day run a project the same way he does."

"Justin truly inspires those around him to be better," said Jason Speller, senior safety specialist. "He allows you the freedom to make your own decisions and learn from your own mistakes. He is a leader of leaders."

JE Dunn donated \$10,000 in Justin's honor to **The Sacred Transition**, a nonprofit created in Marcus Taylor's memory by his wife, Elizabeth, a senior lean services manager at JE Dunn. The organization provides care packages to help individuals and families impacted by cancer. Marcus continues to inspire us all.

a culture of
INCLUSION



“Life’s most persistent and urgent question is: What are you doing for others?”
- Dr. Martin Luther King, Jr.

Early in my career, I found myself focusing on my own path and on what I needed to learn and grow. As I continued my journey, I learned time and time again that acts of service and creating opportunities for others brings me even more joy. When we work together, we can spread that joy to so many corners of our community and make even more of an impact. I am fortunate to work with so many people who selflessly give up many Saturday mornings, afternoons, or even a holiday to serve others, give back to our communities, and mentor our future generations.

Community is at the center of who we are as a company, and many of our employees put in extra time and effort to make a difference. Our Diversity, Equity & Inclusion (DEI) team is thankful to have awesome partnerships with many strategic groups including our employee resource groups, talent management team, and Community Impact leaders in each of our regions. Through this team effort, our DEI vision has expanded its reach and impact within many of the diverse communities we help serve.

In 2022, we deepened partnerships and embraced new opportunities, including contributions to our National Diversity and HBCU scholarships and internships; volunteerism in our communities; and sponsorships of nonprofit organizations focused on health, education, rights, or community development in the United States. We have made such good progress this year by advancing our foundational work and embracing new paths that create impact. Our work will continue, and together, we’ll make even greater strides to advance our vision and spread joy.

As Desmond Tutu said, “Do your little bit of good where you are; it’s those little bits of good put together that overwhelm the world.”

- Zoraya Rowlands, Director of Diversity, Equity & Inclusion



IN THE NEWS

- DIVERSITY & INCLUSION AWARD – GDUSA American Design Awards
- DIVERSITY & INCLUSION EXCELLENCE AWARD – Associated General Contractors (AGC) Kansas City Chapter
- DIVERSITY IN BUSINESS AWARDS – ABC Houston
- ACE AWARD – KC Chamber: Drew Eanes



national diversity SCHOLARSHIP

As part of our commitment to diversity, equity, and inclusion, JE Dunn is proud to offer a National Diversity Scholarship to eight students each year. Focused on construction and engineering students, this \$5,000 scholarship is paid over the course of two years and includes up to two guaranteed internship opportunities.

2022 NATIONAL DIVERSITY SCHOLARSHIP RECIPIENTS

- ANA LIZ | Johnson County Community College
- AUNJRAE | Georgia Institute of Technology
- BHAVAGYNA | San Jose State University
- ELLIS | Pittsburg State University
- EMILIA | Boise State University
- JAEDAN | University of Houston
- MARCO | University of Houston
- VIOLET | Purdue University



HEAR FROM THE RECIPIENTS

BHAVAGYNA | San Jose State University

“Receiving the JE Dunn scholarship has not only aided in helping cover my college tuition, but has also encouraged me to continue pursuing my academic career. As one of the first scholarships I have received in college, the JE Dunn National Diversity Scholarship has additionally given me confidence in my abilities and an opportunity for me to explore a previously unexplored field of mechanical engineering applications. The environment [at JE Dunn] was welcoming and showed me the importance of pursuing a career at a company which values both professional and interpersonal skills and connections.”



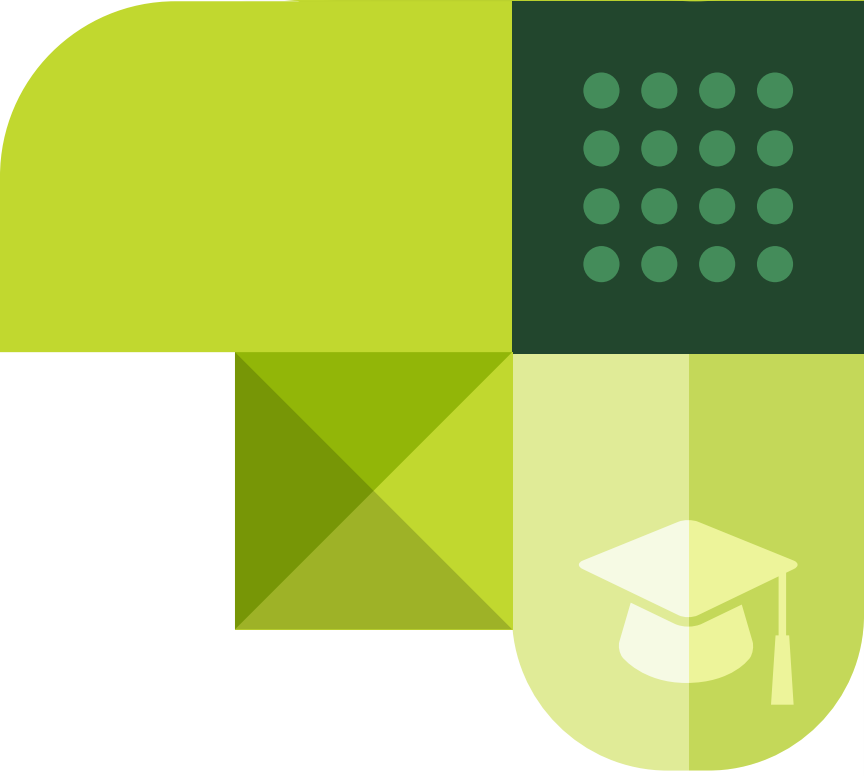
ELLIS | Pittsburg State University

“[This scholarship] allows me to move forward in my career, as construction is my passion and has been since I was young. My experience with JE Dunn has been amazing. I was able to meet two people from the JE Dunn career fair, which led me to the next step of an interview for an internship. I am grateful for the opportunity to have gotten the JE Dunn scholarship and an internship opportunity next summer. I can’t wait to officially get to work on a project with JE Dunn.”



VIOLET | Purdue University

“Receiving this scholarship is a great honor. My hope is that children understand they belong in every industry and in every role no matter what they look like. I hope to be a role model for these kids and show them that it is perfectly fine to be different in this or any industry. JE Dunn’s culture is unmatched by any other company I have had the pleasure of speaking with. The internship experience really helped me fall in love with this industry.”



EMPLOYEE RESOURCE GROUPS

At JE Dunn, employee resource groups (ERGs) are created by and for our employees. We strongly believe in our Key Strategic Initiative #4, which focuses on hiring the best people and having the right culture for all our employees. With that in mind, we support our employees in the creation of ERGs with the goal of promoting a more inclusive environment. JE Dunn's ERGs are designed to support our diverse employees and increase engagement, offering employees an opportunity to make a lasting difference across the organization as they navigate their careers.



"The South Central Moment Connection group had an amazing year together! Our offices had a renewed focus on development and philanthropic events. Together, we read and discussed articles, engaged with guest speakers, and put our boots on the ground in our local communities. It's events like these that really exemplify what it is to be a team and to work together towards a common goal: having the best people and right culture."

- Alex Idelson, Chair, South Central Moment Connection (Senior Quality Specialist)

MOMENT CONNECTION

In 2016, JE Dunn launched **Moment Connection**, a female Employee Resource Group. The group was named after a construction term describing a specific type of connection between two pieces of steel — a moment connection. Today, Moment Connection provides JE Dunn's female employees support, knowledge, and ideas to help bring their authentic selves to work each day and contribute at the highest level possible.

"In 2022, the East Region's Moment Connection group supported eight nonprofit organizations across the region. These partnerships have given us the opportunity to build a deeper connection to our community and with our team members, which in turn strengthens our culture. In the East Region, we have Moment Connection core teams and committees in each of our offices, and we stay connected regionally by sharing ideas and building relationships. We intentionally hold diverse events that are inclusive to all women within the region. The events include a mix of educational, social, and industry events, as well as Community Impact volunteer opportunities. Moment Connection directly impacts JE Dunn's best people and right culture by giving our team members the intentional time and opportunities to connect with other women throughout the organization."

- Elizabeth McKiernan Taylor, Chair, East Region Moment Connection (Senior Lean Services Manager)



WOMEN IN CONSTRUCTION WEEK

Each year, JE Dunn and Moment Connection celebrate **Women in Construction Week**. Organized by the **National Association of Women in Construction (NAWIC)**, the effort raises awareness of the opportunities available for women in the construction industry, emphasizes the growing role of women in the industry, and provides opportunities to give back to the community. In 2022, JE Dunn female employees shared their firsthand experiences with careers in construction, gathered to celebrate, and volunteered across the country.



BUiLD (BLACKS UNITED IN LEARNING AND DEVELOPMENT)

In 2021, JE Dunn launched a new employee resource group. **BUiLD (Blacks United in Learning and Development)** works to foster networking, professional development, mentoring, sponsorship, and leadership opportunities with a focus on maximizing engagement at JE Dunn.

“BUiLD has given me an added sense of purpose around the importance of empowering and building up others. I’m grateful for the ability to interact with others who have faced the same challenges I have in the corporate world and the desire to work together to overcome those challenges together with our colleagues and leadership. Growing a diverse workforce is not only important for black employees but will impact the long-term success of all employees at JE Dunn.”

- Drew Eanes, Senior Client Solutions Manager

“BUiLD helped me find that sense of belonging and was a great support structure for me.”

- Kori Shingles, Senior Diversity, Equity & Inclusion Specialist



BUiLD SUMMIT

BUiLD held its first national gathering for all chapter members in 2022, bringing 130 JE Dunn employees to Kansas City for a two-day summit. A hand-picked guest list included the mayor of Kansas City, and BUiLD participants had the opportunity to listen to the personal journeys of well-respected business leaders and hear from external minority employee resource groups. In addition to all BUiLD participants, every member of JE Dunn’s Executive Leadership Team was in attendance, as well as many other leaders within the company.

“Not only was this a great event for our black employees, but the BUiLD Summit also provided an opportunity for our external partners to witness the great things we are doing at JE Dunn,” said Marcus Walker, engineering services manager and co-chair of BUiLD. “My co-chair Lynnsee Boyse and I are very proud to help lead this group. We are proud to have our CEO, Gordon, as our executive sponsor. Proud that our leadership team listens and understands the impact and importance BUiLD has on our black employees and allies, as well as how it serves to teach others the power of belonging and the power of being able to show up as our authentic selves. At a time when there is a war on talent, BUiLD is a true asset to our company, helping to recruit and retain talented black employees to our JE Dunn family.”

“My favorite part of the BUiLD Summit was the ability for everyone to come together. I think most people recognize that being able to gather and have bonding time with other black employees was impactful. Community is very important, and BUiLD provides community for black employees to support and hear one another.”

- Nakisha Bausby, Senior Diversity, Equity & Inclusion Manager

MARTIN LUTHER KING, JR. DAY

JE Dunn recognizes Martin Luther King, Jr. Day as a company holiday, encouraging employees to view the holiday as a day of service. The theme for 2022 was: Anybody Can Serve. Local BUiLD chapters organized volunteer and service opportunities around the country. JE Dunn's intranet also featured quotes from BUiLD members about their first memories of Martin Luther King, Jr. Day and what the celebration means to them.



BLACK HISTORY MONTH

In honor of our Black employees and Black History Month, JE Dunn made an intentional donation again in 2022 to one nonprofit in each of our regions that is focused on Black health, education, rights, or community development.



MEET OUR 2022 BLACK HISTORY MONTH PARTNERS

EAST | FIRE STATION FUND

Fire House #38 is located in an underserved Black community in Atlanta, not far from JE Dunn's office. The fire station is in an area where the Atlanta Housing Authority and Invest Atlanta are making an investment. The Atlanta BUiLD and Community Impact teams partnered during Black History Month to make much needed repairs to the fire house, in conjunction with the National Association of Minority Contractors (NAMC).

MIDWEST | GIVING HOPE & HELP

Giving Hope & Help is a nonprofit organization that supports domestic violence survivors, provides essential resources to end period poverty, empowers college bound and non-traditional students, and inspires cancer patients, lifting all those served to live their best life.

SOUTH CENTRAL | PARK SOUTH YMCA

The **Park South YMCA** provides intentional enrichment and physical activities as part of its afterschool program. Its world-class swim program provides core skills for safety around the water with a particular focus on Black children, who are 60 percent less likely to know how to swim than their white peers.

WEST | PORTLAND YOUTH BUILDERS

For more than 25 years, **Portland Youth Builders** has helped thousands of young people change their lives through a combination of education, vocational training, counseling, career development, and long-term support. The result? Stronger families and stronger communities.

"The support that JE Dunn has granted **Giving Hope & Help** to advocate for those affected by domestic violence and to end period poverty in domestic violence shelters, places of refuge, and for girls, women, and menstruators locally and across the globe is life changing. We used the grant towards our Education Is Your Passport Scholarship Program to award underserved high school graduates college scholarships. We awarded 16 college scholarships and one full-ride scholarship to Metropolitan Community College - Penn Valley in 2022. The support received from JE Dunn is greatly appreciated and impacts our programs, which enables us to positively change the trajectory of the lives we serve, resulting in a better community, state, and world. Thank you, JE Dunn! We are grateful for your continued support and mission to give back to the community."

- Jessica McClellan, Founder & President, Giving Hope & Help

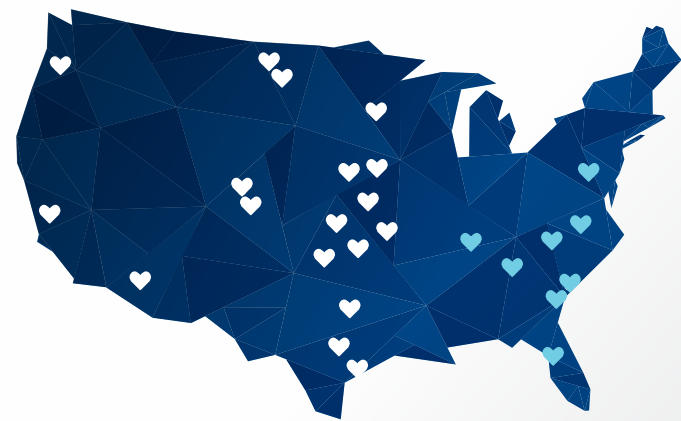
PLACES



INSPIRED PLACES

From coast-to-coast, JE Dunn and our employees are committed to making an impact across our 26 offices. We asked each of our local offices to share spotlights of their Community Impact in 2022, and their responses were incredible. This is the power of JE Dunn.

EAST



EAST

"There is incredible power in community. We have a strong sense of community within JE Dunn, so our teams naturally gravitate to the opportunities to give back to the communities we live and build in."

- DAN KAUFMAN, PRESIDENT, EAST REGION

ATLANTA

The Atlanta office focused on the small things that make a difference in people's lives through "The Giving Tree," which was populated with suggestions of random acts of kindness. The Atlanta office's passion for giving did not disappoint. Not only did we reach our goal of 120 random acts of kindness, but our job site teams also organized clothing drives and neighborhood and park clean-up days. Atlanta employees made improvements at a local fire station, volunteered at local elementary schools, fed the homeless, and hosted several donation events including one for **The Sacred Transition** and our annual **Hammer Down Road Race**. The Atlanta office reached \$45,000 in employee match dollars that benefited its local community in 2022.

"It's through our commitment to build a better community that JE Dunn establishes long-lasting relationships with the people our work affects and inspires the next generation of youth to pursue our industry as a career. It's important to our team because we strive to continue making JE Dunn the builder of choice for clients and the standard that which other competitors are measured against, as well as the contractor our trade partners and design teams want to do business with."

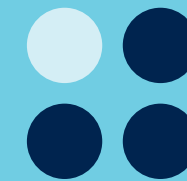
- Brian McElroy, Project Manager



VOLUNTEER SPOTLIGHT KYLE WOOD

CHAIR - YOUNG LEADERSHIP PROGRAM (YLP) OF THE ASSOCIATED GENERAL CONTRACTORS OF AMERICA, YLP MEMBER OF THE YEAR (2021/2022)

Since his childhood, JE Dunn Senior Project Manager Kyle Wood has been passionate about making an impact in his community. For many years, Kyle has volunteered at **Camp Twin Lakes**, an organization that greatly influenced his career and decision to work in healthcare construction. Camp Twin Lakes provides camps for children facing serious illnesses, disabilities, and other life challenges. Kyle helped build its welcome center with his grandfather and fundraised to send five children to camp.



CHARLESTON

The Charleston office is a small but mighty team that engaged with five organizations through seven different volunteer events and sponsorships in 2022. The Charleston team was awarded Group Project of the Year for the first annual cornhole tournament they created, raising \$8,000 for **Charleston Promise Neighborhood**. The team is partnering with **Goodwill** and Charleston Promise Neighborhood to create a workforce development and community engagement program while working on the Jamestown Navy Yard project. These partnerships will provide children with access to mentorship and career paths they previously had not considered and will provide working-age adults with a path toward trade certifications and interviews with trade partners. Our hope is that these partnerships will enable participants to find work on the project and beyond, while strengthening the surrounding community.

"In Charleston, so many projects are being developed in historically disadvantaged neighborhoods. Building inspired communities is about so much more than just building a new apartment or a new school. It's about building up the people in those communities and ensuring they have fair and equitable access to services, education, healthcare, jobs, and housing. Our team is committed to building these communities, not only through our day-to-day work but also by giving back and volunteering at organizations that make a difference in the lives of those who live in these communities. In addition, we are actively involved in programs that are committed to DEI, workforce development, and fixing our region's affordable housing crisis."

- Janet Bates, Client Solutions Manager



CHARLOTTE

JE Dunn's Charlotte office teamed up with many longstanding nonprofit partners again in 2022. Employees accumulated 112 volunteer hours during National Volunteer Week by delivering furniture, sorting school supplies, packing welcome baskets, and sorting cans. With the help of trade partners, JE Dunn donated 56,309 school supplies and \$34,864 to **Classroom Central** during our annual school supply drive. In March, the Charlotte office hosted a poker tournament and ping pong tournament that raised over \$35,000 to benefit **Beds for Kids**, **The Cooper Royall Foundation**, and **Atrium Health Foundation**. Employees helped build a playground for Marie G. Davis Middle School, packed over 800 backpacks full of school supplies for Classroom Central, and biked countless hours during the 24 Hours of Booty event.

"Building inspired communities is important to me because it shows how devoted JE Dunn is to the community beyond building buildings. JE Dunn's involvement in volunteering and fundraising is a differentiator to the organizations we are committed to within the community. Coming in as an intern, I could feel the genuine passion JE Dunn employees had for making Charlotte the best place to live and the appreciation from the community and organizations for the efforts."

- Bailey Barnett, Project Engineer

NASHVILLE

In 2022, the Nashville office served more than 20 organizations throughout Middle Tennessee, logging nearly 1,000 volunteer hours. This year, our Hammer Down Race raised an estimated \$180,000 for **Our Kids** that was matched by an anonymous donor, resulting in a total of \$360,000 — the most ever raised from the annual event! It was our best year yet partnering with Our Kids, and we hope to make 2023 even better!

In 2022, our partnership with **Boys & Girls Club of Middle Tennessee (BGC)** continued to evolve, including a school supply drive, STEM Week, Trunk or Treat, and Construction Industry Club. In March, our employees participated in a day of service, serving lunch to veterans at **Operation Stand Down** and cleaning up Radnor Lake. Plus, employees led a **Habitat for Humanity** home build, **Sacred Transitions** donation drive and packing event, multiple volunteer shifts at **Second Harvest of Middle Tennessee**, the **Black Book Project**, **Salvation Army Angel Tree** gifts, **The Ramsey Closet** donations, and many more.

“Our world needs more understanding, unity, and compassion. When we take the time to go into our communities, to share our skills and values, we have an opportunity to impact lives on a human level. It is important that we take all the opportunities we have at JE Dunn to give back to the communities that we impact and show pride in those communities. It is important that we go out and inspire young people in the community to look at the construction industry with wonder and curiosity. Getting out into our communities reminds us why we build and who we are building for at the end of the day.”

- Desiree Curry, Project Manager



2022

AGC OF MIDDLE TN COMMUNITY SERVICE AWARD – *Second Consecutive Year*

BOYS & GIRLS CLUB OF MIDDLE TENNESSEE (BGC)

JE Dunn’s Nashville office hosted 15 students with the **Boys & Girls Club of Middle TN (BGC)** for its first **Construction Industry Club**.

The club provided students with a behind-the-scenes look at different industries and careers that they might not be exposed to otherwise. One of BGC’s mottoes is, “It’s hard to be what you can’t see.” The Construction Industry Club allowed the Boys & Girls Club students to meet industry experts, learn about a typical day in construction, see what goes into constructing a building, and develop marketable workforce skills. Over five weeks, Nashville employees joined the students at the JE Dunn warehouse where they started each day with a learning session and got to hear from a vast array of AEC experts. After lunch, the students worked on a hands-on project where they got to build a six by six section of drywall while wearing personal protective equipment, using power tools (with supervision), and applying what they learned at the beginning of the day. The Nashville employees had just as much fun teaching the students as the students did learning!

“Our partnership with the **Boys & Girls Club of Middle Tennessee** has already provided multiple opportunities for our employees to engage directly with the youth served by them. The Construction Industry Club is an example of how working with these types of organizations enables JE Dunn’s employees to have a meaningful and positive impact on the communities where we live and work.”

- Drew Emerson, Vice President

RALEIGH

JE Dunn's Raleigh team supported three charities in 2022: **Food Bank of Central and Eastern North Carolina, The Ronald McDonald House, and The Women's Center.** The Raleigh office raised enough funds to provide 15,000 meals through the Food Bank of Central and Eastern North Carolina during National Volunteer Week. Several Raleigh employees danced the night away at the annual Red Shoe Crew event for The Ronald McDonald House. The Raleigh team finished the year by supporting The Women's Center during the holidays.



"As someone who grew up in upstate New York on the edge of where the suburbs give way to rural communities, I rode the school bus with kids who didn't get to be worried about what kind of sneakers they were wearing; they had bigger worries. Food insecurity remains a persistent issue today, and when I witness firsthand what the food bank does for our local communities here in North Carolina—whether urban, suburban, or rural—it resonates."

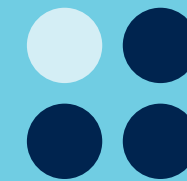
- Robert Sunukjian, Senior Preconstruction and Estimating Manager



VOLUNTEER SPOTLIGHT ROBERT SUNUKJIAN

CHARLOTTE

Robert Sunukjian is a senior preconstruction and estimating manager at JE Dunn, and the Charlotte office's champion for the Food Bank of Central & Eastern North Carolina. Robert led an initiative in November to get local team members involved in donating to the food bank, with matching donations first through JE Dunn's Employee Match Program, PLUS an additional match for #givingtuesday through the nonprofit.



SAVANNAH

The Savannah team was overjoyed to be able to connect with others once again while also giving back! We started 2022 off with a bang serving as the title sponsor for the **St. Joseph's/Candler Foundation's** annual clay shoot benefiting the advancement in cancer care in the Savannah region. The event raised a record-breaking \$207,000! Our team partnered with **Habitat for Humanity** to help beautify and landscape a neighbor's yard. Not only did it feel great to help this family, but it was also an awesome team-building experience. Employees also partnered with **Girls on the Run**, **Girl Scouts of Historic Georgia**, **United Way of the Coastal Empire**, the **Frank Callan Boys & Girls Club**, the **Jacksonville Spartan Race**, and the **Second Harvest Food Bank**. The Savannah team had a strong year, and we are ready to embrace the opportunities to help our community in 2023!

"In construction, we have the benefit of seeing the tangible impact of our work. One of the intangible benefits of working for a company dedicated to community impact is that we can be active participants in positive change. It's important that we not only build beautiful buildings in the Savannah and Charleston areas, but also build relationships, touch lives, and make the cities we live and work in better. Inspired employees inspire others and their communities. To me, there is no better representation of what JE Dunn stands for."

- Ashley Lloyd, Estimating Engineer



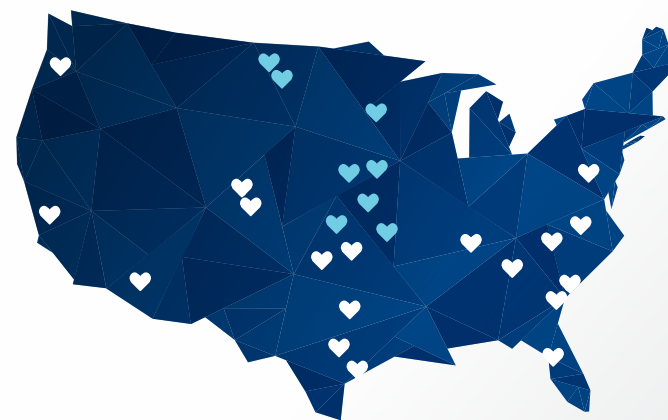
TAMPA

This year, the Tampa office teamed up to give time and resources to make an impact in their community. Local community ambassadors organized a **Habitat for Humanity** fundraiser and building construction participation. Employees started working on the house in April and continued to work until July when the house was completed. Tampa employees also teamed up with **Metropolitan Ministers**, which offers comprehensive services for at-risk and homeless families in under-served areas. Employees participated in a food drive that helped serve their hungry neighbors in the Tampa area.

"Our Community Impact goals in 2022 were to help the community we work for while bonding with our teams, and we met those goals!"

Maria Escalona, Project Manager

MIDWEST



MIDWEST

"Building inspired communities is deeply ingrained in the culture of our region. The Dunn family's example has set us all on a path of truly impactful community engagement through the incredible generosity of their time, their ideas, their passion, and often with financial support as well. I believe our community impact is one of, if not the most important aspect, that connects us as one team, one office, one region, and one company."

- PAUL NEIDLEIN, PRESIDENT, MIDWEST REGION

DES MOINES

In 2022, the JE Dunn Des Moines office was involved with several community activities. Employees participated in Bowl for Kids' Sake in support of **Big Brothers Big Sisters**, cleaned up the property of a retired ironworker to allow him to remain in his house through **ReBuilding Together**, and provided sponsorship and support for **ZERO - The End of Prostate Cancer** through its annual golf tournament.

"Our commitment to building inspired communities is important to our team because we all live in this community and feel a closer connection when we know we are improving the lives of others through our actions and financial support. The JE Dunn culture of giving back is exemplified by our Des Moines employees, and we enjoy helping where we can."

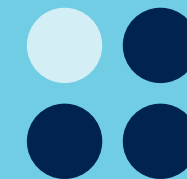
- Troy Hodapp, Senior Project Manager



VOLUNTEER SPOTLIGHT BILL MILLER

DES MOINES

Senior Mechanical/Electrical Engineer Bill Miller is a ZERO champion and prostate cancer survivor. He has channeled his passion to ending prostate cancer by organizing the Des Moines Tee Off golf tournament. "Without Bill, the event would not be what it is today," said Troy Hodapp.



KANSAS CITY

Almost a century ago, JE Dunn was founded right here in Kansas City on the principles of doing the right thing and serving others. Our commitment to those principles is as strong now as it was then.

In 2022, KC employees donated more than \$10,000 to create care packages with **The Sacred Transition**, delivering them to patients at two cancer treatment centers. The annual JE Dunn Sporting Clay Classic raised more than \$30,000 for **KU Cancer Center** to support patients in our community and advance cancer research. Eighteen employees participated in the **JE Dunn Has Heart Red Face Relay**, raising money for awareness and prevention of heart disease and stroke. Proceeds from the annual employee golf tournament benefited **Build Trybe** in 2022, a local nonprofit that provides construction trades training to youth in foster care, raising a total of \$8,860 through employee donations and the Employee Match Program. For the first time since 2019, the **United Way BBQ** competition came back, celebrating our employees' barbeque skills and kicking off our annual giving campaign. To end the year with gratitude, we again partnered with the **Salvation Army** with Angel Tree Christmas gifts for children and Red Kettle bell ringing by our executive team.

We will continue the legacy J.E. Dunn, Sr. created by supporting our communities any way we can, whether engaging with students through the newly launched **Building the Future** initiative, serving on nonprofit boards, volunteering for causes our employees are passionate about, or participating in fundraising events. Together we are creating a better Kansas City today and tomorrow, for the next century and beyond.

"Kansas City has been our home base for 99 years and will be for another 99, and it is going through a transformational change. While it is our responsibility to lead the built environment, it is also our responsibility to impact lives by sharing our talents and treasures to ensure our entire community positively experiences this change. Whether it be in creating new career opportunities, supporting our aspiring diverse trade partners, or walking side by side with our charitable partners to support their goals, building inspired communities has been and will remain front and center of our culture and how we lead."

- Jeff Blaesing, Project Manager & KC Office Leader



ROYALS SENSORY ROOM

In 2022, JE Dunn partnered with the Kansas City Royals to build two sensory rooms, making all events hosted at Kauffman Stadium sensory inclusive. Sensory sensitivities or challenges with sensory regulation are often experienced by individuals with autism, dementia, PTSD, and other similar conditions. One of the major barriers for these individuals attending sporting events is the sensitivity to overstimulation by noise. With these new rooms, Kauffman Stadium and its employees are now better prepared to assist guests by providing a comfortable and accommodating space when attending a baseball game or other event.

"I believe it has made a huge impact for the Royals community and has improved people's experience of a ball game that may need that type of service. It has brought me joy hearing from the Royals and others about how much the rooms are used. My favorite part of this project was the group of workers we got to work with. Everyone went above and beyond to make this project happen all the way down to the end, getting there before the news crew on opening day to make the finishing touches. It was a great project all around. The purpose of these rooms falls right in line with our JE Dunn motto of creating a space and activities to help enrich our customers' lives." - Quentin Jones, Field Engineer

"I hope this provides an opportunity for fans and families to experience a professional sporting event that would have been previously restricted by the facility or environment. Hopefully, the two new sensory rooms at Kauffman Stadium can solve both of those issues and help them have an enjoyable experience. I was honored to represent JE Dunn and help a great organization like Royals Charities, along with the countless fans who will find comfort in the sensory rooms. The appreciation from the Royals organization and fans has been extremely humbling." - Mike Boyd, Senior Project Engineer



MINNEAPOLIS

In 2022, the Minneapolis office engaged with the community in a different, strategic, meaningful way! We built relationships with a variety of organizations and found ways to not just volunteer once, but to also have lasting, continued involvement.

“Our office has committed to finding opportunities that make a lasting impact and that are not performative. It is taking us longer to find them, but as we continue to build relationships, we are finding opportunities that go a long way to building an inspired community that trusts us, can rely on us, and knows we care.”

- Kori Shingles, Senior Diversity, Equity & Inclusion Specialist



NORTH DAKOTA DICKINSON & WILLISTON

JE Dunn’s Dickinson and Williston offices were busy in 2022 impacting communities across North Dakota. The Dickinson office hosted a back-to-school-supplies BBQ with local trade partners and community leaders, collecting school supply donations and enjoying locally made hamburgers and brats. The supplies and monetary donations were distributed throughout schools in Dickinson and eight other counties in Southwest North Dakota. The team in Minot, North Dakota gave back by building an ADA accessible ramp to access a new modular classroom for a local school. The team spent hours after work purchasing the material needed and completing this project. Employees also assisted in building playground equipment at the **Welcome House** in Bismarck and collected various native seeds in Medora that will be used to repopulate the **Theodore Roosevelt Presidential Library** grounds with indigenous plants.

“North Dakotans are a tight-knit group with a strong sense of community. Our JE Dunn team often finds themselves working in cities or towns where the whole population knows each other. It’s extremely rewarding for us to not only be recognized for the amazing projects we build in these communities, but the time we invest into developing relationships and making a difference within them.”

- Nate Lange, Senior Project Engineer

OMAHA

At JE Dunn Omaha, our team takes great pride in our state, and we're committed to improving it in every way we can. That includes our daily efforts as Nebraska's #1 contractor and all the individual actions our employees take to impact our community. In 2022, our office donated time, expertise, and resources to over 100 nonprofits and local groups. Every employee is empowered to support whatever cause is important to them, whether that's joining community boards, supporting students who want to learn about the ACE industries, or volunteering for organizations that directly impact the areas we live in.

"Our team often uses the phrase 'built for the community, by the community' when referencing local projects. It's not just a catchy tagline; it's something we really believe in. We love the state of Nebraska, and we feel privileged to build here. So, we do what we can to immerse ourselves in the community, give back, and support the growth."

- Chris Pesek, Omaha Office Leader



SPRINGFIELD

In 2022, the small but mighty JE Dunn Springfield team sponsored and participated in multiple nonprofit events and outreach, including the **Cox Health Foundation** charity golf tournament, and a Missouri State Construction Club event. Employees were active as part of the Missouri State Construction Department Advisory Board and joined the Springfield Contractors Association annual cornhole tournament.

"Everyone wants to be part of something bigger than themselves, and JE Dunn's commitment to building inspired communities makes this a reality. Beyond the incredible building projects we get to be a part of, JE Dunn has been very supportive of my personal involvement in serving and giving back to our Springfield community and regularly encourages all of us to do so. I very much appreciate these aspects of JE Dunn's culture, which align with my personal values and are woven throughout our entire company."

- David Atkisson, Senior Project Manager & Springfield Office Leader



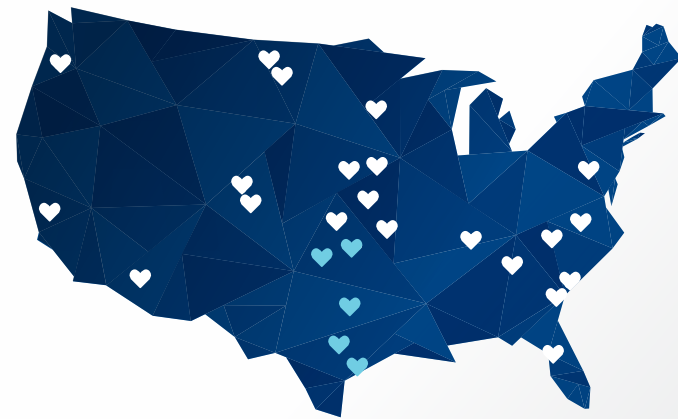
WICHITA

The Wichita office began engaging more in the community in 2022, as the office grew with more "permanent" employees versus road warriors. We dove headfirst into creating a relationship with the **Wichita Children's Home** and spent time walking its facility and identifying its needs and how that fits within our skill set. We have service projects scheduled through 2023 to help this organization while they give our community's children a safe place to live and stay.

"JE Dunn's commitment to building inspired communities is important to us because we work and live in a small community, and the impact is seen immediately. Shortly after committing our time to the Wichita Children's Home and completing a few projects, one of our employees was chatting with a friend who fosters children from the Wichita Children's Home. He went on about how amazing the facility is, how they treat fosters, and how he's glad to see a friend working to help keep those things possible."

- Mollie Currid, Senior Project Engineer

SOUTH



SOUTH CENTRAL

"At JE Dunn we believe in families first, doing the right thing, serving others, and growing as a team. I continue to be inspired by our Community Impact efforts in the South Central region, as they provide our people the opportunity to give back to the communities where they work, live, and play."

- GREG LOREI, PRESIDENT,
SOUTH CENTRAL REGION

AUSTIN

As the Austin office continues to grow, leadership has worked to ensure our local community impact grows in tandem. In 2022, employees helped serve multiple nonprofits such as **YMCA Camp Moody** where they focused on building new playground equipment and fences, restoring canoes, and painting picnic tables. Employees were also given the unique opportunity of volunteering at the **Balcones Canyonland Preserve** where they helped to remove an invasive species that had infiltrated the area. The Austin office continued to foster relationships with the **Mary Lee Foundation**, serving survivors of brain injuries and adults with neurological disorders and continued their focus on supporting childcare centers that serve economically disadvantaged households through an “all in” relationship with **United Way**.

“JE Dunn’s commitment to building inspired communities is important to me because great things can happen when a community is inspired. It’s important that when we build a project, our goal is to also preserve and enhance the community in which we’re building, not just complete the project and leave.”

- Will Westerheid, Project Engineer 1



UVALDE STRONG

UVALDE MATCH CAMPAIGN

At JE Dunn, we believe in families first. On May 24, 2022, our hearts broke for the families that will be forever impacted by the school shooting in Uvalde, Texas. In response, JE Dunn launched an internal company-wide fundraiser led by the Austin office to support the **Uvalde Strong Survivors Fund**. This fund provided direct financial assistance to the survivors of the deceased and those directly affected by the tragedy, with 100 percent of the contributions going directly to the victims and survivors. Together, JE Dunn employees and our Employee Match Program contributed \$25,142 to the Uvalde Strong Survivors Fund.

DALLAS

The Dallas office has been building inspired communities for over 25 years in the Dallas-Fort Worth market. This year, the team volunteered their time with eight non-profit organizations to help the communities where we work and live. Employees raised over \$2,500 for **United Way**, organized clothes, built with **Habitat for Humanity**, picked up food and furniture for **Mission Arlington**, and introduced 1,000 students from eighth grade through high school to the construction industry through the TEXO-Bid Expo. We drew attention to the important issue of child abuse, reading over 27,484 names of abused children at **Save Jane** and volunteering at its 10th annual AIM for Advocacy Clay Shoot.



"The JE Dunn Dallas office's commitment to volunteering and financial support of local charities and non-profit organizations involved in changing the lives of youth and adults reinforces our collective desire to make a difference in the communities we serve."

- Chris Peck, Senior Vice President & Dallas Office Leader

HOUSTON

In 2022, Houston employees centered their community impact work on the **Ronald McDonald House**, led by a Houston office leader who joined the nonprofit's board of directors. Employees served dinners at the main house, provided lunch for the three hospital locations, collected school supplies, and restocked "**Grandma's Closet**" with gifts for all ages. Additionally, the PE peer group did some repair work at the **House of Tiny Treasures**, and employees supported the **Houston Food Bank** with a day of sorting and building in the annual Construction competition.

"When I was considering joining JE Dunn, I was impressed by JE Dunn's reputation in the community. Even more so now that I have been here over a year. So many of our employees truly embody our purpose of existing to enrich lives, and to be supported so fully by JE Dunn's corporate generosity is just the icing on the cake."

- Hyde Griffith, Vice President & Houston Office Leader

OKLAHOMA CITY

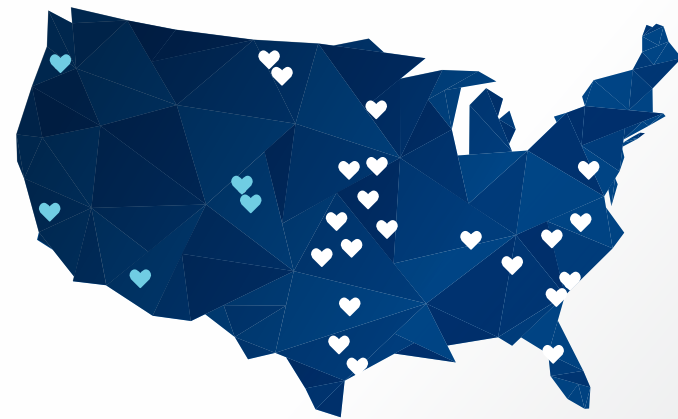
In 2022, the Oklahoma City team made an intentional community impact, serving in a variety of ways. Employees celebrated Black History Month with a breakfast sponsored by BUiLD and the community ambassadors, weekly spotlights on local African American trailblazers, and a virtual meeting with Dr. George Henderson, Oklahoma University's first African American dean on the Norman campus. During National Volunteer Week, our employees picked up trash along the Oklahoma River and served at an arts festival, STEAM career fair, and the Oklahoma City Memorial Marathon. Our employees also tutored for **Big Brothers Big Sisters**, did a chili cook off for **United Way**, participated in a **Habitat for Humanity** build, and engaged in a multitude of other ways to support the Oklahoma City community.

"Building inspired communities is important to the Oklahoma team because it allows us to share the latest in innovation and provide a high-level commitment to our surrounding communities that allows exceptional growth, utilizing the latest advances in construction techniques to enrich the communities we live and work in."

- Tom Davis, Vice President & Group Manager 1



WEST



WEST

"Being engaged in our local communities is not only a part of our history and culture in the West Region, but it's also a priority for every employee. It is not in our DNA to be builders of only concrete and glass, without actively engaging in our communities to ensure a positive impact to those in need."

- MARK REILLY, PRESIDENT, WEST REGION

NORTHERN CALIFORNIA

SANTA CLARA

In 2022, employees at JE Dunn's newest office location sorted 12,600 pounds of food at **Second Harvest of Silicon Valley**. The Northern California team also sponsored children and families in need at Christmas through Bill Wilson's Adopt-A-Family Program in Santa Clara. **The Bill Wilson Center** is committed to working with the community to ensure that every youth has access to the range of services needed to grow to be healthy and self-sufficient adults.



"Our commitment is twofold: First, bringing our people together to work on a common goal which highlights giving back to our community; second, providing support for those who are less fortunate than we are."

- Estelle Cragholm, Senior Project Manager

PHOENIX

Rise up. This was the focus of the 2022 Southwest Division, not just with key strategic initiatives, but also within our teams and community. Our starting goal for 2022 was to significantly contribute to 12 community service projects with a fundraising goal of \$80,000. The goal every year is always to do more – to provide more volunteers, to log more service hours, to be a bigger part of the positive impact within our community. And this year, we succeeded thanks to the gracious hearts of our Southwest people! In 2022, we dedicated ourselves to 21 community service projects within the Phoenix area. These opportunities ranged from food and clothing drives to onsite building improvements for local charitable organizations.

"JE Dunn's commitment to our communities, and its encouragement of our employees to seek out and participate in community events vital to them, is the foundation of building inspired communities. Because of JE Dunn's support, thousands of people in our valley will receive the food, shelter, and care they so desperately need. I am proud to be part of an organization that gives hope to so many."

- Ava Apodaca, Office Manager

PORTLAND

JE Dunn's Northwest office celebrated 30 years in the Portland community this year. In 2022, our commitment to building inspired communities focused on partnering with organizations that help under-resourced community members through skills training and education, providing food resources for children at risk of hunger, and offering construction services for those in need. Our largest fundraising effort, the **Making Links Golf Tournament**, raised more than \$5,000 for **Constructing Hope**, an organization whose goals are to help the long-term unemployed attain sustainable careers, increase workforce diversity, reduce recidivism, and meet hiring needs in the construction industry. In addition to dollars raised, we have seen an increase of time donated by our employees. The passion that our employees have for giving back to the community continues to grow and we are proud of the positive impact they have made in the Northwest.

"Being engaged in the community is part of our culture and is important because it provides a purpose to what we do every day. Helping our communities is personally gratifying and builds team camaraderie. It is part of who we are at JE Dunn!"

- Darin Stegemoller, Senior Vice President & Portland Office Leader



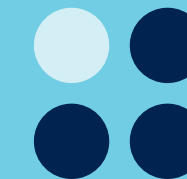
VOLUNTEER SPOTLIGHT NOAH PRINS

PORTLAND

Noah Prins is dedicated to helping individuals in his community. Noah has volunteered for multiple years with **Catalyst NW**, a nonprofit that brings together donated resources and caring volunteers to do free critical construction repairs for low-income neighbors. In 2022, Noah organized a group of JE Dunn volunteers and the project engineer peer group for multiple volunteer events with Catalyst NW.

"Having gone through a fair amount of adversity as a child, I've realized where I find myself today is truly a testament to the power of community. Many at JE Dunn know it's our community and loved ones that have shaped us into who we are and enabled us to do what we do. We wish to inspire the people and places that have so generously inspired us."

- Noah Prins,
Project Engineer



ROCKY MOUNTAIN

COLORADO SPRINGS & DENVER

The Rocky Mountain offices stepped it up once again in 2022 with 30 volunteer events. Through several fundraisers, our employees raised over \$200,000 for local nonprofits. Each of our local jobsites found a nonprofit partner that aligned with their team's interests and really took the initiative to give back in the neighborhoods in which they build in. All our employees are looking forward to another great year of giving back in 2023!



"To me it's simple; the grass is greener where you water it! It's important to give back to the neighborhoods we build in so that we can make the community stronger."

- Taylor Scantlin, Project Engineer 1

COLORADO YOUTH OUTDOORS

JE Dunn's Larimer County Jail project team has created an ongoing partnership with **Colorado Youth Outdoors (CYO)** that serves youth through outdoor recreation. In 2022, the project team worked alongside DLR Group to perform 100 volunteer hours, building pergolas at the CYO facility. According to Callie Morris, senior marketing specialist and community ambassador, "This team has really embraced giving back through such a great organization with the mission of building relationships through traditional outdoor recreation."



ENRICHING
LIVES



we are committed to

ENVIRONMENTAL, SOCIAL, AND GOVERNANCE RESPONSIBILITY

JE Dunn is committed to positively contributing to environmental and social causes and to conduct business ethically and responsibly, striving to be an ESG leader within the Architecture, Engineering, and Construction (AEC) industry. Visit www.jedunn.com to view our full ESG report.

JE DUNN'S ENVIRONMENTAL, SOCIAL, AND GOVERNANCE (ESG) GOALS

1. Ensure sustainable consumption and production practices throughout the construction process.
2. Build innovative and resilient infrastructure to enrich the lives of those we serve.
3. Build and promote a productive, diverse, and inclusive workplace through strategic inclusion and diversity plans.
4. Create a comprehensive and measurable Community Impact strategy to unify our employee and corporate giving.
5. Support and promote a governance structure that ensures inclusive and sustainable economic growth, full and productive employment, and challenging work for all.

OUR INSPIRED HOME

JE Dunn's ESG commitment to innovative and resilient infrastructure means providing inspiring, healthy environments in our offices across the country to fuel creativity and collaboration while being a true building partner for our clients. It is that commitment to overall health and well-being and forward-thinking approach that has resulted in an exciting milestone. In 2022, JE Dunn's Kansas City headquarters office earned the International **WELL Building Standard's WELL Gold Certification**, making it the first building in Missouri to achieve WELL certification under the latest version of its standards.

The WELL Building Standard version 2 is a scientifically backed vehicle for buildings and organizations to cultivate more intentional spaces that enhance the health and well-being of its inhabitants. JE Dunn's commitment to meet the extensive list of protocols, facility standards, and operational policies laid forth by the WELL Building Standard aligns with our mission of putting our employees first.

Our Kansas City office surpasses the minimum score needed for gold certification with its community-oriented café offering healthy options, lactation rooms for nursing mothers, outdoor spaces, exercise gym, and promotion of diversity and inclusion. Achieving this certification means employees and visitors can feel safe in an environment knowing that everything from the design of the building entryway to the air you breathe has been assessed with employees' health in mind.

health and
WELL BEING

At JE Dunn, we believe in whole-person health and well-being, including physical, emotional, and mental wellness. This year, JE Dunn employees got moving across the country through walks, runs, golf, volleyball, even pickleball, promoting health and well-being while supporting our nonprofit partners.



JE DUNN HAS HEART

The Red Face Relay is a national effort at JE Dunn to raise funds and awareness for the American Heart Association. The relay was started in our Kansas City office by Dan West, a 35-year-veteran of JE Dunn. Dan became an avid runner after experiencing heart issues and would run so hard that his face turned bright red. He began supporting the American Heart Association, rallying other employees to do the same. Dan passed the torch to Corey Erdkamp, general superintendent, and the annual relay has grown from nine runners in 2013 to 204 employees from 11 different offices in 2022.

“Being active and healthy equates to living longer lives. My personal commitment to being more active matches JE Dunn’s commitment to health and well-being for all our employees. It makes me feel great knowing I am not alone. For the last decade, I have joined forces to help support the American Heart Association by being a part of the Red Face Relay as it promotes physical activity and raises awareness for a healthy lifestyle. The message of the American Heart Association has aligned with my own personal thoughts and that keeps me fueled to volunteer my time and energy for a great cause.”

- Corey Erdkamp, General Superintendent



SUICIDE PREVENTION & AWARENESS

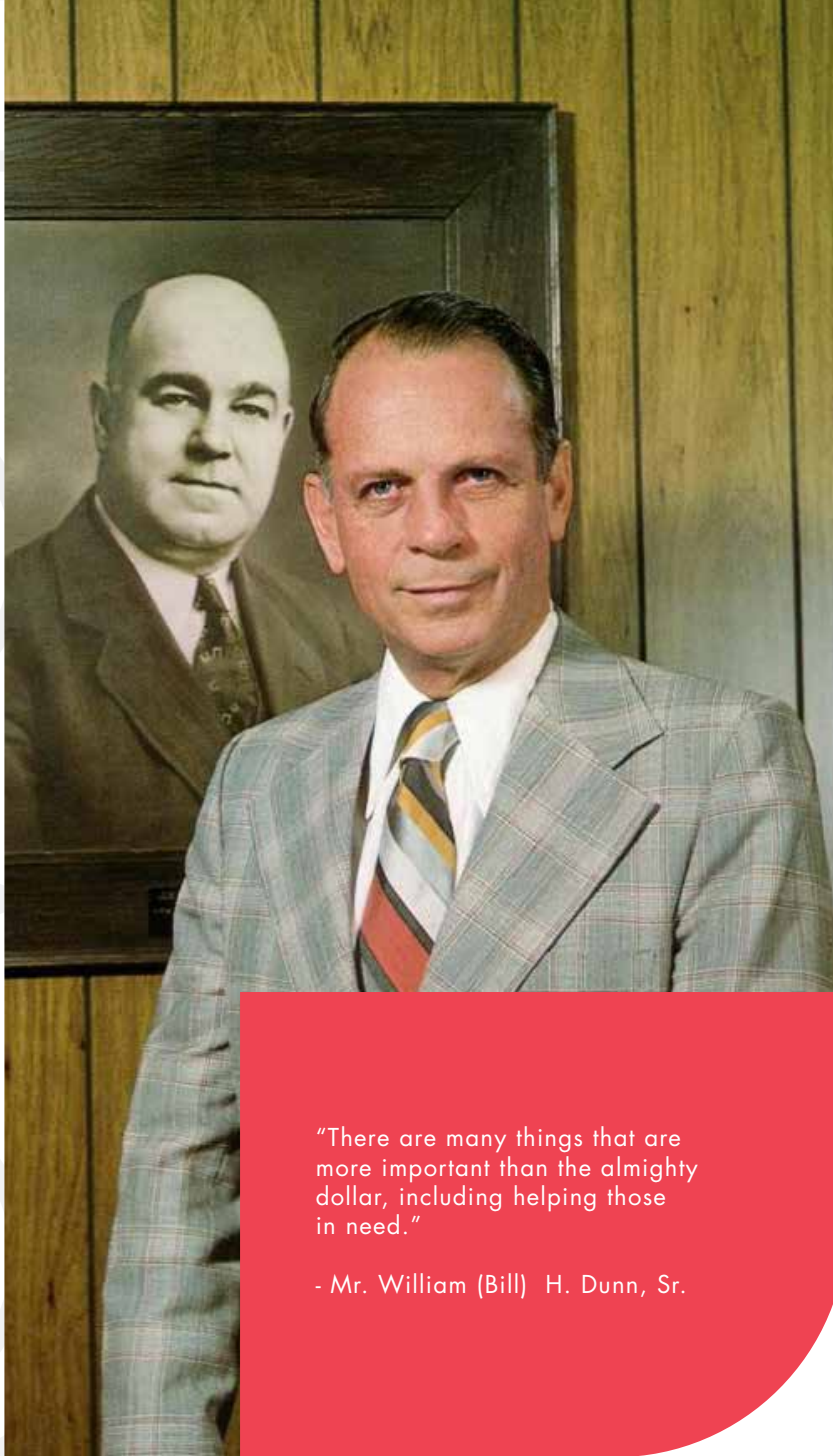
According to the Centers for Disease Prevention, construction occupations have one of the highest suicide rates compared to other industries. During National Suicide Prevention Week (September 5-9, 2022), JE Dunn offices and jobsites across the country came together to Stand Up for Suicide Prevention. During the Stand Up, employees took time to pause and honor the lives lost and people impacted by suicide. Office leaders and superintendents led conversations across the country to reduce stigma and encourage employees to reach out if they or their peers are struggling. As an industry that focuses on safety, JE Dunn recognizes that mental health awareness and suicide prevention are just as important as any other safety protocol. We are committed to providing resources, support, and compassionate leadership to help in decreasing risks and preventing suicide.

a family legacy

THE DUNN FAMILY FOUNDATION

John Ernest "Ernie" Dunn, Sr., founder of JE Dunn Construction, established a culture of giving at the company, starting on day one. In 1981, Ernie's son, Bill Dunn Sr. and his five sons founded the **Dunn Family Foundation**, creating a giving mechanism for the family to reinforce their family values of integrity, generosity, and compassion.

Today, the Dunn Family Foundation is a private charitable foundation managed by JE Dunn's Community Impact team. The Foundation is dedicated to enhancing the quality of human life and creating solutions to community needs in the Greater Kansas City metropolitan area. Led by a family board of directors, the foundation prioritizes programs that enrich the community, help people in need, strengthen spirituality, and promote diversity and inclusion.



"There are many things that are more important than the almighty dollar, including helping those in need."

- Mr. William (Bill) H. Dunn, Sr.

honoring our VETERANS

Each Veterans Day, JE Dunn intentionally honors the brave individuals who chose to serve our country and are part of our JE Dunn family. This year, JE Dunn featured five of our own veterans in an internal and external campaign, in addition to our annual donation to a veteran-focused nonprofit in honor of our employees who have served. JE Dunn military veterans selected Gary Sinise Foundation, a nonprofit that focuses on creating and supporting unique programs designed to entertain, educate, inspire, strengthen, and build communities.

"JE Dunn's commitment to our military veterans is significant because it lets veterans like me know we are valued. Hearing Bill Dunn, Sr.'s story about returning from the war and building JE Dunn into the company it is today allows veterans to see that we can make a difference when entering the civilian workforce.

JE Dunn knows that when they hire veterans, they are getting trainable, diverse, high-speed employees who can adapt to their work situation and what is thrown at them."

- Jason Peters, 12B, Combat Engineer, Army National Guard, 2001-2007



VETERAN SPOTLIGHT RICHARD CERRETTI

OFFICE LEADER - JE DUNN CHARLOTTE AND RALEIGH

"My time in the service is still the most valuable experience of my life," said Richard, a former combat engineer with U.S. Army's 14th Engineer Battalion. "It's something that grounds me to this day."

As Richard finished his service obligation and began looking for a job, he knew he had found an immediate fit during his interview at JE Dunn (then RJ Griffin). "There was a great sense of service. There was a sense of camaraderie. There was a sense of a lot of what I had in the army and what I was looking for in the civilian world," said Richard.

"Every day I wake up excited about who I go to work with. As long as that's what we have at JE Dunn, this will continue to be where I want to be."



building the future: A K-12 CONSTRUCTION EDUCATION INITIATIVE OF JE DUNN

In 2022, JE Dunn launched **Building the Future**, an innovative K-12 construction education initiative centered on bringing awareness to careers in construction. Through engagement with local schools and educational nonprofits, students are gaining hands-on experience and awareness of the many opportunities available in the industry. In the first year alone, Building the Future connected with more than 2,600 students and 130 educators in classrooms and at local events.

In Kansas City, students and educators from across the metro participated in a monthly Introduce a Student to Construction Day – a full day of construction-related presentations, tours, and activities to familiarize students with the breadth of opportunity in the construction industry. Students engaged with JE Dunn construction professionals in various roles, seeing multiple facets of the construction industry.

“We believe construction creates choice,” said Chera Hishaw, Community Impact Education Manager, and former educator. “Building the Future is designed to inform and connect students, parents, and partners. By building awareness of the multifaceted nature of the construction industry and supporting workforce readiness skills, this program has the opportunity to enrich the entire community.”



Learn more at
buildingthefuture.jedunn.com.



STUDENT SPOTLIGHT MILKEY SARBESSA

MILKEY SARBESSA IS A SENIOR AT PARK HILL HIGH SCHOOL WHO PARTICIPATED IN A JOB SHADOW EXPERIENCE THROUGH BUILDING THE FUTURE.

“My experience at JE Dunn has been life changing in so many ways,” said Milkey. “I was curious about marketing and client solutions and how it played a role in the construction industry. I met, shadowed, and networked with many employees within JE Dunn, not only in the marketing department but project management, estimating, and more. Meeting people of diverse demographics in the construction industry allowed me to realize that there is a place for me in the construction industry. The connections and life lessons I learned throughout my time at JE Dunn is something that will forever stick with me.”





a letter from

OUR PRESIDENT & CEO

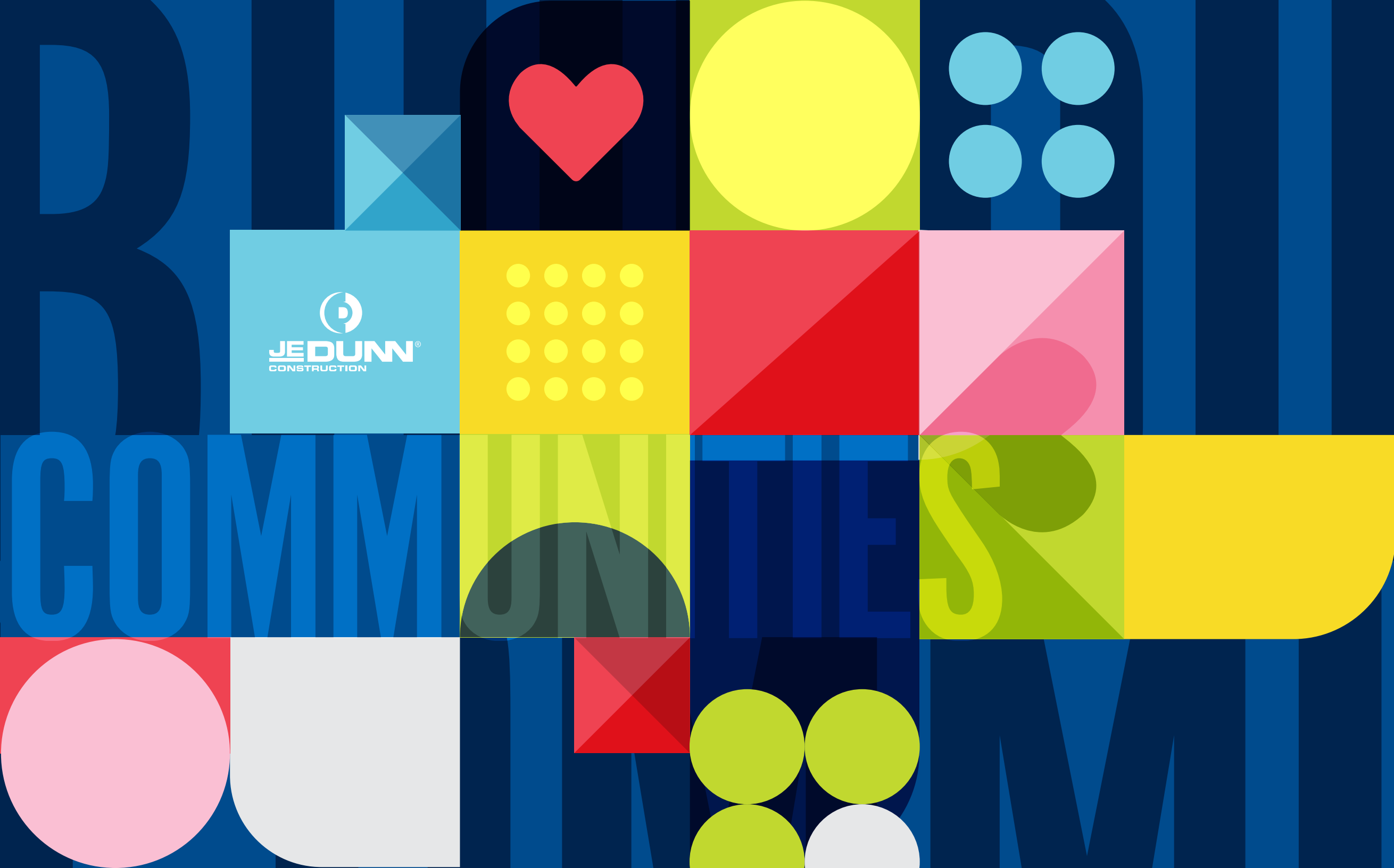
At JE Dunn, we build inspired people and places, and that has never felt truer than in 2022. Every day, I see ways we are working together to continue improving our vibrant culture—one where all employees are empowered to make meaningful contributions to the company's success.

Our black employee resource group, BUiLD, was a particular source of inspiration to me this year. The first-ever BUiLD Summit was one of the best experiences I've had in my 26 years at JE Dunn. BUiLD members from around the country gathered in Kansas City with our entire executive leadership team, and I experienced such joy, gratitude, and a true sense of family.

From the people I work with every day, the superintendents and their teams building such impressive projects, leadership across the country, volunteers throughout our offices going the extra mile to make a difference—our inspired people have built this company to be the amazing place it is.

Sincerely,

Gordon Lansford, III
PRESIDENT | CEO



WE EXIST TO
ENRICH LIVES
THROUGH
INSPIRED
PEOPLE AND
PLACES



jedunn.com